

SETUP GUIDE - 5000 INDICATORS

Transferring Z tags matched EID/VID tags to a 5000 indicator

This setup guide shows how to download a Z Tags 'tags file' (with matched EID and VID tags) from the Z Tags website and upload it for use on your XR5000, ID5000 or JR5000 weigh scale indicator. Let's look at this common scenario of how and why you would want to do this.

Scenario: You could be a stud sheep or beef farmer buying matched EID and VID tags. You want to upload the tags file to your indicator prior to a weighing session with the animals. This will allow you access to animal VID information during a weighing session so that you can:

- apply the correct VID tag to an animal without one. Once you have scanned that animal's EID, the indicator will display the correct VID tag to apply to the other ear.
- check that the animal you are scanning is the correct one. If it *is* correct, the VID tag on the animal will match what is displayed on the indicator. If it *is not* correct, it will be because you accidentally scanned the wrong animal OR you have scanned an EID tag that is in your pocket OR the animal has been tagged with the wrong VID tag.

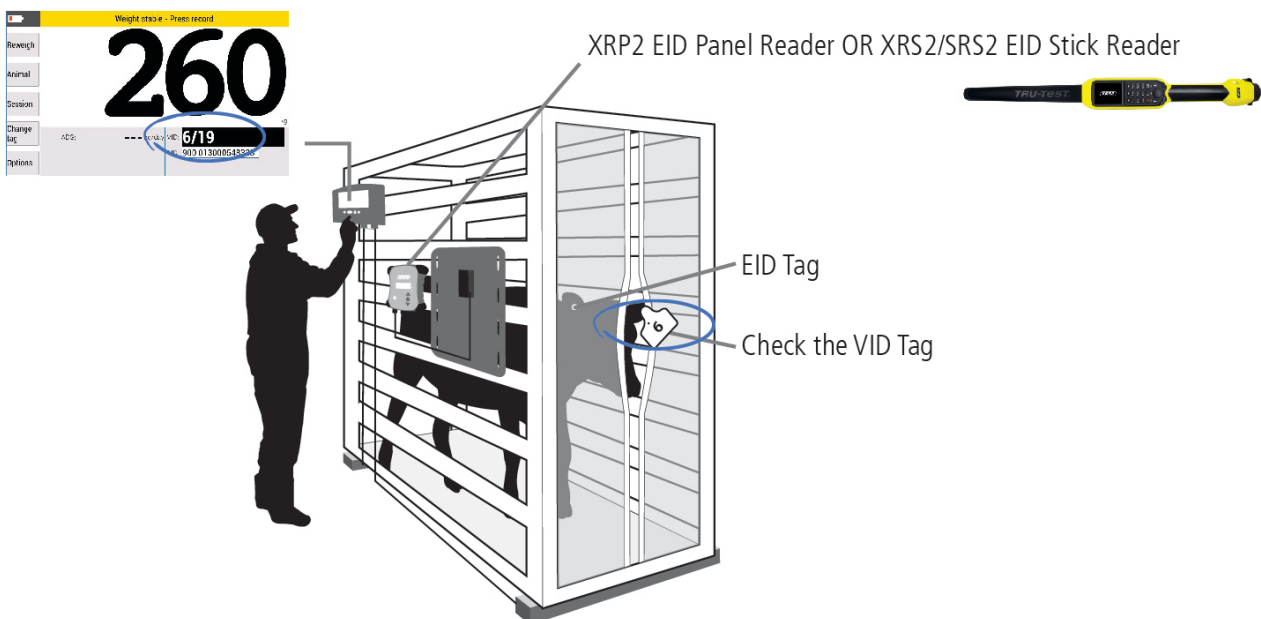


- These procedures are applicable only in New Zealand.
- Other scenarios might include the NAIT number against each animal, for purposes of sending the information onwards to NAIT and/or Datamars Livestock for further analysis.

Overview

With this in mind you:

- Buy a matched set of EID and VID tags (e.g. 100) from Z Tags and the tags file is made available on the Z Tags website.
- Download the tags file from the website and manipulate the data in Microsoft Excel as required.
- Upload the modified tags file onto your indicator (via Data Link for PC/Animal Lifetime information).
- Set up your indicator for a weighing session. Scan each animal with an EID reader (XRP2 EID Panel Reader or XRS2/SRS2 EID Stick Reader) as you weigh. Visually check the VID on the animal and observe the VID/Birth Year displayed on the indicator. The VID tag on the animal should match what is displayed on the indicator. If not, see the flow-chart on the last page of this document.

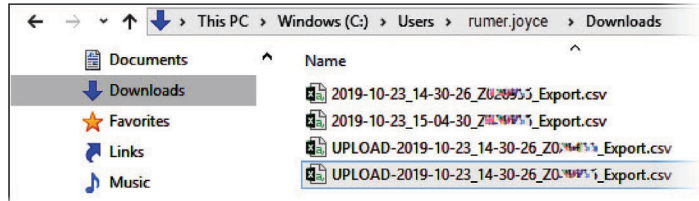


1 Z Tags tags files

A file containing Z Tags information (e.g. EID and VID pairings) can be transferred to the indicator prior to your next weighing session. This will mean that when the animal's EID is scanned, the corresponding VID will be displayed on the indicator.



Z Tag tags files are named with a syntax of Date_Time_Z Tags Order No._Export.csv. This allows you to save, sort and easily identify your files as you download and work with them.

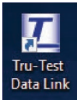


2 What you need

The hardware and software you'll need to work with:



A Windows PC with internet connection to access the Z Tags website.



Installed on the PC:

- *Tru-Test Datalink for PC* application
- *Microsoft Excel 2016* (or higher)

Tru-Test XR5000, ID5000 or JR5000 weigh scale indicator



USB connecting cable for connecting the indicator to the PC.



3 Downloading a tags file from Z Tags

Recording your Z Tags Order No.

When you purchased or arranged for your new delivery of tags you will have been given a *Z Tags WEB Order No.*

If your ordered via LIC, you may also use the *LIC Sales Order number.*

Both numbers can be used as your *Z Tags Order No.*

You will enter this *Z Tags Order No.* number to access your tags file in the next step.

Order No./Packing Slip no.	1136803
Page	1/1

Customer No.	CNZ11136
Reseller	KAWKAT
Ship Date	07/12/2019
Your P/O	C123456789
Web Ord. No.	Z123456
Our Contact	
Key Account	Upper North Island
Auckland, 01.01.19	

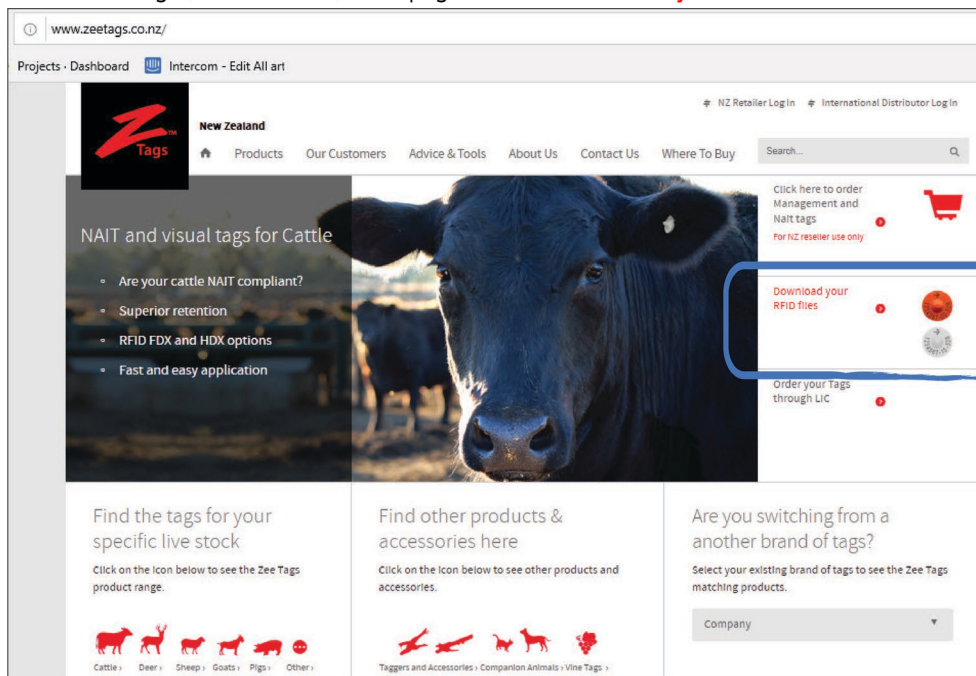
Use when retrieving orders purchased via a Rural Store and LIC.

This is your LIC Sales Order number. Use only for LIC Orders.

Downloading from the website

Download your Z Tags tags (or bucket file) from the Z Tags website:

1. Access www.zetags.co.nz in your browser.
2. From the Z Tags (New Zealand) homepage click on **Download your RFID files:**



3. From the Z Tags RFID Number Export screen enter your Z Tags Order No. and click the **Download** button:

enter **Z Tags Order Number**

click **Download**

4. After a few seconds the file will download into your local Downloads folder and you will be prompted to save it:

5. Click **Save** and navigate to save it in a suitable folder on your PC.

6. Click **Open** to launch and edit the file in Microsoft Excel:

	A	B	C	D	E
1	00000 0900 013000548347	20	19		
2	00000 0900 013000548347	19	19		
3	00000 0900 013000548347	18	19		
4	00000 0900 013000548347	17	19		
5	00000 0900 013000548347	16	19		
6	00000 0900 013000548347	15	19		
7	00000 0900 013000548347	14	19		
8	00000 0900 013000548347	13	19		

4 Modifying the tags file ready for uploading

Prior to uploading your Z Tags tags file to the indicator, some manipulation within Microsoft Excel is required to change the format so that the data displays as you want on the indicator.

With our scenario example:

Tags file as supplied from Z Tags

Column A = EID with prefix

Column B = VID

Column C = Birth Year of animal

	A	B	C
1	00000 0900 0130005481347	20	19
2	00000 0900 0130005481346	19	19
3	00000 0900 0130005481345	18	19
4	00000 0900 0130005481344	17	19
5	00000 0900 0130005481343	16	19
6	00000 0900 0130005481342	15	19

Tags file modified, ready for uploading to the indicator

- A header row has been added in row 1 with column names used to match the defaults used on the indicator (EID, VID).
- The animal VID # and Birth Year's have been combined into the VID field (for useful display on the indicator)

	A	B
1	EID	VID
2	900 0130005481347	20/19
3	900 0130005481346	19/19
4	900 0130005481345	18/19
5	900 0130005481344	17/19
6	900 0130005481343	16/19
7	900 0130005481342	15/19

Strip leading zeroes from the EID

1. Press <Ctrl-H> to present the *Find and Replace* dialogue.
2. Enter **00000 0** against *Find what:* and leave nothing against *Replace with:*
3. Click **Replace All** to perform a stripping of 00000 0 from the current worksheet (in effect the EID's in Column A)
4. Click **Close** to close down the dialogue



By default, Microsoft Excel will display a long number (e.g. EIDs) in scientific notation (e.g. 9.85152E+15):

	A	B	C	D
1	EID			
2	9.85152E+15			

This may cause issues when the file is transferred to the indicator.

To change this, select the column containing EIDs, right-click, select **Format Cells**. In the **Number** tab, select **Number** and set **Decimal Places** to 0.

The EIDs will now display normally:

A2		fx 9851520003896570			
	A	B	C	D	
1	EID				
2	9851520003896570				

Combining the birth year and VID

In this scenario you want to see the VID/Birth Year on the indicator's display and manipulate the tags file data into that format.

1. Click on cell **D1** to select it.
2. Click on formula text box and enter **=B1 & "/" & C1**

D1		fx =B1 & "/" & C1			
	A	B	C	D	E
1	900 013000*~8E1347	20	19		
2	900 013000*~8E1346	19	19		
3	900 013000*~8E1345	18	19		
4	900 013000*~8E1344	17	19		
5	900 013000*~8E1343	16	19		
6	900 013000*~8E1342	15	19		

enter formula to combine VID and Birth Year together

select cell in first row of next free column



Apart from numbers and letters, only these characters can be used in data to be uploaded onto the indicator: Forward slash (/), full stop (.), hyphen (-) and embedded spaces.

3. Press **Enter** to perform calculation in selected cell:

D1		fx =B1 & "/" & C1			
	A	B	C	D	E
1	900 013000*~8E1347	20	19	20/19	
2	900 013000*~8E1346	19	19		
3	900 013000*~8E1345	18	19		
4	900 013000*~8E1344	17	19		
5	900 013000*~8E1343	16	19		
6	900 013000*~8E1342	15	19		

On pressing Enter after entering formula, cell calculates and moves focus to next row

4. Click on cell D1 again to select it.
5. Hover mouse around cell till **+** appears:

D1		fx =B1 & "/" & C1			
	A	B	C	D	E
1	900 013000*~8E1347	20	19	20/19	
2	900 013000*~8E1346	19	19		
3	900 013000*~8E1345	18	19		
4	900 013000*~8E1344	17	19		
5	900 013000*~8E1343	16	19		
6	900 013000*~8E1342	15	19		

select cell above again and hover mouse over it till **+** appears

double-clicking **+** sign copies the formula down to the first empty

- Double-click on + to fill column with calculated results, but only down to the last row of data:

	A	B	C	D	E
1	900 013000548347	20	19	20/19	
2	900 013000548346	19	19	19/19	
3	900 013000548345	18	19	18/19	
4	900 013000548344	17	19	17/19	
5	900 013000548343	16	19	16/19	
6	900 013000548342	15	19	15/19	

- Right-click on calculated column D (column is selected with green border) and select **Copy** from the dropdown menu:

	A	B	C	D	E	F
1	900 013000548347	20	19	20/19		
2	900 013000548346	19	19	19/19		
3	900 013000548345	18	19	18/19		
4	900 013000548344	17	19	17/19		
5	900 013000548343	16	19	16/19		
6	900 013000548342	15	19	15/19		
7	900 013000548341	14	19	14/19		
8	900 013000548340	13	19	13/19		
9	900 013000548339	12	19	12/19		
10	900 013000548338	11	19	11/19		
11	900 013000548337	10	19	10/19		
12	900 013000548336	9	19	9/19		
13	900 013000548335	8	19	8/19		

- We need to paste the data on top of itself to turn it into "values", so click **Home > Paste > Values & Source Formatting (E)**

	A	B	C	D	E
1	900 013000548347	20	19	20/19	
2	900 013000548346	19	19	19/19	
3	900 013000548345	18	19	18/19	
4	900 013000548344	17	19	17/19	
5	900 013000548343	16	19	16/19	
6	900 013000548342	15	19	15/19	
7	900 013000548341	14	19	14/19	
8	900 013000548340	13	19	13/19	
9	900 013000548339	12	19	12/19	
10	900 013000548338	11	19	11/19	
11	900 013000548337	10	19	10/19	
12	900 013000548336	9	19	9/19	
13	900 013000548335	8	19	8/19	

- Drag your mouse over cells in Columns B and C to mark them as a selected set of cells.

- Right-click and select **Delete** from the dropdown menu:

	A	B	C	D	E	F
1	900 013000548347	20	19	20/19		
2	900 013000548346	19	19	19/19		
3	900 013000548345	18	19	18/19		
4	900 013000548344	17	19	17/19		
5	900 013000548343	16	19	16/19		
6	900 013000548342	15	19	15/19		
7	900 013000548341	14	19	14/19		
8	900 013000548340	13	19	13/19		
9	900 013000548339	12	19	12/19		
10	900 013000548338	11	19	11/19		
11	900 013000548337	10	19	10/19		
12	900 013000548336	9	19	9/19		
13	900 013000548335	8	19	8/19		

- Click option button **Entire column** and **OK** to delete columns B and C:

	A	B
1	900 013000548347	20/19
2	900 013000548346	19/19
3	900 013000548345	18/19
4	900 013000548344	17/19
5	900 013000548343	16/19
6	900 013000548342	15/19
7	900 013000548341	14/19

Add a header row

- Right-click on row 1 and select **Insert...** from the dropdown menu.
- Click on option button **Entire row** and click **OK**

The screenshot shows a spreadsheet with columns A through E and rows 1 through 11. Row 1 is highlighted. A context menu is open over row 1, with 'Insert...' selected. An 'Insert' dialog box is also open, showing options: 'Shift cells right', 'Shift cells down', 'Entire row' (selected), and 'Entire column'. The 'OK' button is highlighted.

A blank row is inserted as a new row in the spreadsheet as the new row 1.

- Enter EID as the header above the EID column, and VID above the new combined VID/Birth Year column:

	A	B
1	EID	VID
2	900 013000548347	20/19
3	900 013000548346	19/19
4	900 013000548345	18/19
5	900 013000548344	17/19
6	900 013000548343	16/19
7	900 013000548342	15/19
8	900 013000548341	14/19
9	900 013000548340	13/19
10	900 013000548339	12/19
11	900 013000548338	11/19

- Now your tags file is ready for uploading to the indicator and can be saved, ready for use (see next section).

Saving the modified CSV file with a different file name

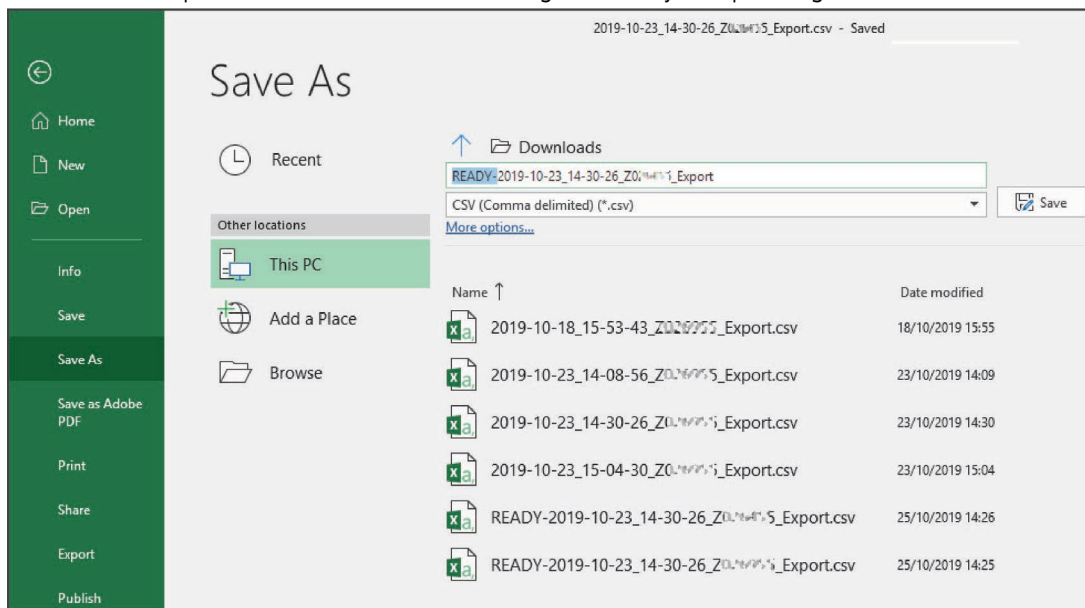
You need to save your modified csv file with a different file name ready for uploading to the indicator.



When you save your modified Z Tags tags file it is recommended that you name it in a consistent manner, and retain the link to the supplied Z Tags tags file. When prompted to save the file, use the name of the original tags file and prefix it with something like UPLOAD in the filename. You can retain an archive of tags files for use later and easily sort on date/time and distinguish the modified ones.

In Microsoft Excel:

1. Click **File > Save As** (and the dialogue prompts with the existing filename and Downloads folder).
2. Enter a prefix (e.g. UPLOAD) in front of the filename to indicate this is the modified file.
3. Click **Save** to export and save the file as a new tags file, ready for uploading to the indicator:




Should you wish to navigate to a different folder to store your modified tags file in, click the **More options...** link to do this.

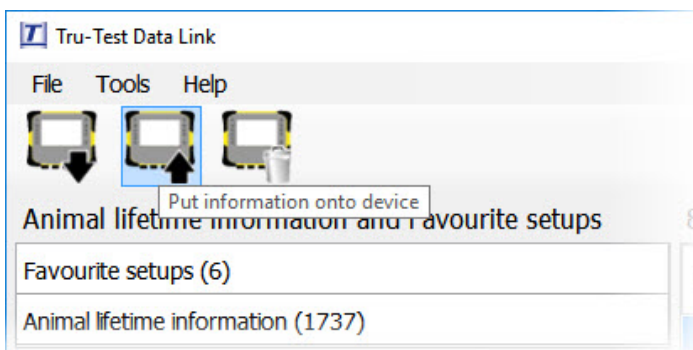
5 Uploading modified tags file to the indicator

Transfer your modified Z Tags tags file from the PC to the indicator using *Tru-Test Data Link for PC* software.

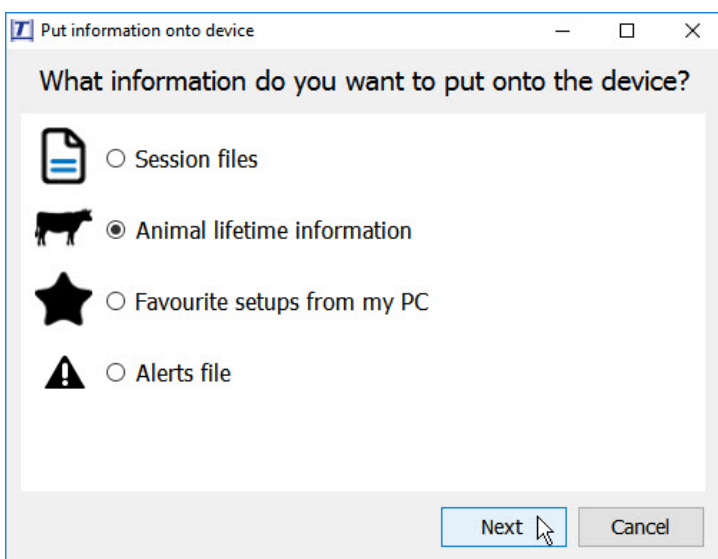
1. Connect the indicator to a PC using the cable supplied.



2. Launch *Tru-Test Data Link for PC* on your PC.
3. Click  to transfer data from the PC to the indicator.



4. Select option button **Animal lifetime information** and click **Next**.



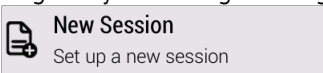
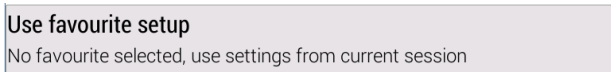
5. Browse to find the modified Z Tags tags file, select it and click **Open**.
6. Data Link will show a preview of the information to be transferred to the indicator.
7. Click **Save**.

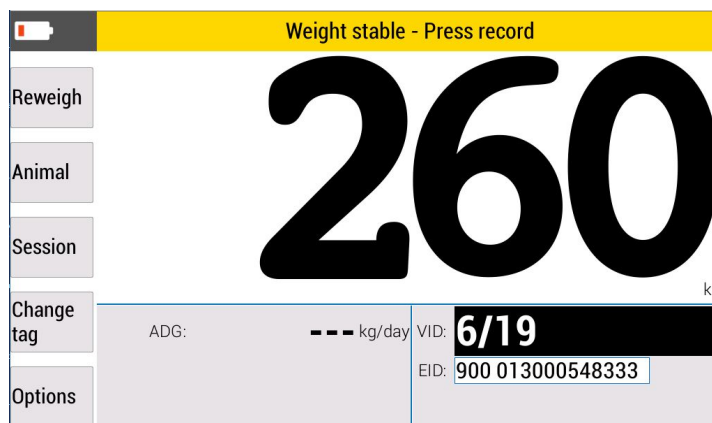


If animal lifetime information already exists on the indicator, the information will be merged with the existing information.

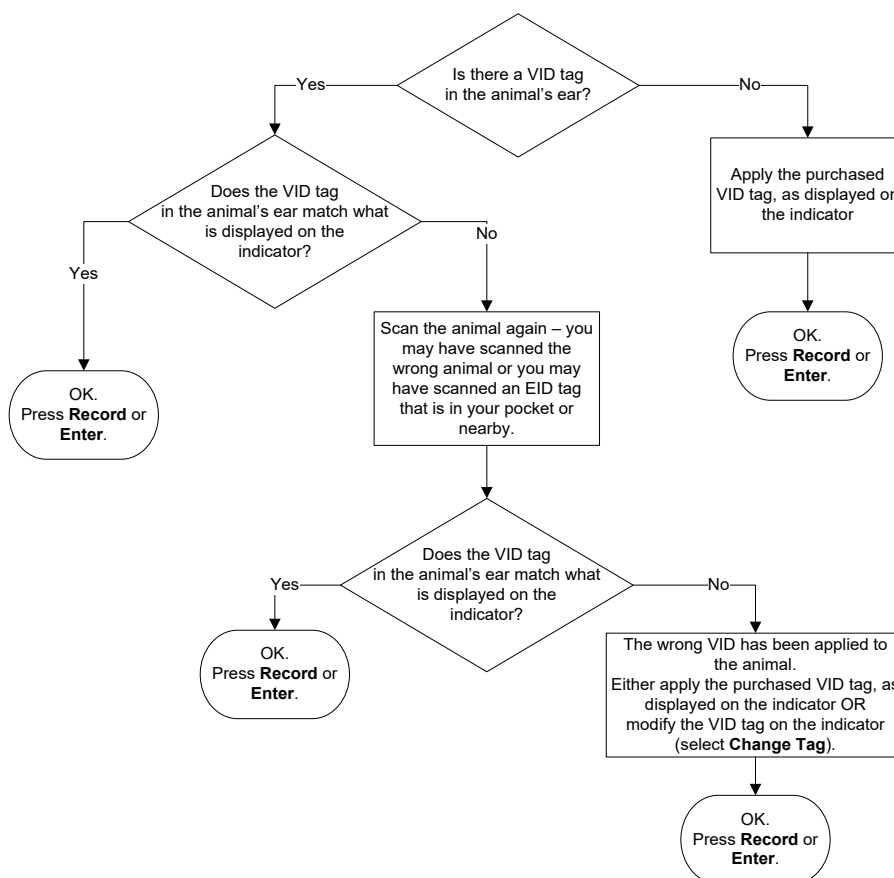
6 Using the tags file information on the indicator

Now that you have uploaded the Z Tags file you can begin a weighing session.

- From the **Home** screen, press  to start a new weighing session.
- Press , select **Weigh with ID** (or another favourite setup of your choice) and press **Use** to display the VID and EID tag numbers as you weigh.
- Scan each animal with an EID reader as you weigh. The animal's VID/Birth Year and EID number will be displayed on the indicator:



- Visually check that the animal has a VID tag attached and that the tag details displayed on the indicator match the animal. If not, proceed as follows:



For further information regarding your stock management system, contact Datamars Limited on 0800 878 837.
For technical support, contact 0800 AGDATA (0800 243 282).